

AGENDA

JEFFERSON COUNTY BOARD MEETING

Tuesday, September 10, 2013 7:00 p.m.

**Jefferson County Courthouse
320 South Main Street, Room 205
Jefferson, WI 53549**

1. **CALL TO ORDER**
2. **PLEDGE OF ALLEGIANCE**
3. **ROLL CALL**
4. **CERTIFICATION OF COMPLIANCE WITH OPEN MEETING LAW**
5. **REVIEW OF THE AGENDA**
6. **APPROVAL OF AUGUST 13, 2013 COUNTY BOARD MINUTES**
7. **COMMUNICATIONS**
 - a. Treasurer's Monthly Report (Addendum to Agenda)
 - b. Resolution – "Urging the County Administrator and County Finance Committee to Include Funding for Membership on the Wisconsin River Rail Transit Commission in the 2014 Jefferson County Budget" (Page 1-2)
 - c. Zoning Committee Notice of Public Hearing, September 19, 2013, 7:00 p.m. Rm 205 (Page 3-4)
8. **PUBLIC COMMENT**
9. **SPECIAL ORDER OF BUSINESS AND RELATED RESOLUTIONS**
 - a. Presentation of Final Design Development of Highway Facility – Barrientos Design & Consulting, Norm Barrientos
 - b. Resolution – Highway Facility – Choice of Construction Material (Page 5-13)
 - c. Resolution – Highway Department building size (Page 14)
 - d. Resolution – Highway Facility – Automated Vehicle Wash Alternative Bid (Page 15-18)
 - e. Resolution – Highway Facility – Geothermal/Environmental Options (Page 19-23)
- COMMITTEE REPORTS / RESOLUTIONS / ORDINANCES**
10. **PLANNING & ZONING COMMITTEE**
 - a. Report – Approval of Petitions (Page 24)
 - b. Ordinance – Amend Zoning Ordinance (Page 25)
11. **ADMINISTRATION AND RULES COMMITTEE**
 - a. Resolution – Support prioritizing road maintenance (Page 26)
12. **FINANCE COMMITTEE**
 - a. Resolution – Authorization for replacement of county-wide voting equipment (Page 27-28)
13. **HUMAN RESOURCES COMMITTEE**
 - a. Ordinance – Amend Personnel Ordinance to clarify the implementation of the consultant's reclassification recommendations (Page 29)

14. INFRASTRUCTURE COMMITTEE

- a. *Resolution – Approval of bid for Hillside Roof (Addendum to Agenda)
- b. *Resolution – Approval of bid for demolition of former Countryside Home (Addendum to Agenda)

*The Infrastructure Committee will vote on these items at their September 10th meeting prior to the board meeting.

15. PARKS COMMITTEE

- a. Resolution – Authorize recreational trail grant application and acceptance (Page 30)
- b. Resolution – Authorize purchase of approximately 17.5 acres of Crawfish River frontage (Page 31)

16. ANNOUNCEMENTS

17. ADJOURN

**NEXT COUNTY BOARD MEETING
OCTOBER 8, 2013 7:00 P.M. ROOM 205**

RESOLUTION No. 2013-46**Urging the County Administrator and County Finance Committee to
Include Funding for Membership on the Wisconsin River Rail Transit Commission
in the 2014 Jefferson County Budget**

WHEREAS, the Principle Rail Line Segments formerly owned by the Chicago, Milwaukee, St. Paul and Pacific Railroad (Milwaukee Road) extending between Prairie du Chien, Prairie du Sac, Madison, Watertown, Waukesha, Janesville, Elkhorn, and Walworth in Wisconsin, and Fox Lake in Illinois were abandoned by said railroad years ago, and

WHEREAS, the Wisconsin River Rail Transit Commission (WRRTC) was created by the counties of Crawford, Dane, Grant, Iowa, Richland, Rock, Sauk, Walworth, and Waukesha for the purpose of providing for the continuance of rail service on the Principle Rail Line Segments formerly owned by Milwaukee Road, and with authority to acquire the use of said Principle Rail Lines by purchase, lease or otherwise to provide for the operation of freight rail service thereon by contract or otherwise, and

WHEREAS, the WRRTC was created by the adoption by each county, respectively, of a resolution which authorized the execution of a contract creating the Wisconsin River Rail Transit Commission and by the execution by each county, respectively, of a Contract Creating Commission Pursuant to Wisconsin Law To Provide Certain Transportation Services With Power To Acquire A Transportation System, and

WHEREAS, since 1980, the Wisconsin & Southern Railroad Company has provided freight rail service in the Wisconsin Counties of Crawford, Dane, Grant, Iowa, Richland, Rock, Sauk, Walworth, and Waukesha, under contract with the Wisconsin River Rail Transit Commission, and

WHEREAS, since 2000, the Wisconsin & Southern Railroad Company has provided freight rail service in Jefferson County, Wisconsin, said service beginning in Madison, WI and ending at Dayton Avenue in Watertown, WI., extending east-west and serving all communities in between, and

WHEREAS, the Commission, WisDOT, and the Wisconsin & Southern Railroad Company are currently investigating the potentiality of acquiring additional rail line segments in Jefferson County, which if purchased these lines would contain several freight rail shippers solely relying on short-line and regional freight rail service for transportation of goods and products throughout the county, the state, and the country, and

WHEREAS, ever since its creation in 1980, the Commission and its member counties have experienced substantial economic benefits from the continuation of freight rail transportation and from the strong leadership from member counties as well as from local units of governments within the counties, and

WHEREAS, it is essential from the standpoint of the welfare and to the best interests of the counties, its rail customers, and the inhabitants thereof that the railroad service on said line be retained as an active public railroad corridor, and

WHEREAS, the provision of freight rail service by the Wisconsin & Southern Railroad Company has been of great economic benefit, not only to the counties which are members of the Wisconsin River Rail Transit Commission, but to all surrounding counties, including Jefferson County and to the State of Wisconsin as well, and

WHEREAS, by becoming a member of the Wisconsin River Rail Transit Commission, Jefferson County will be better able to facilitate the continuance of rail service within its borders and on the entire former system of the Milwaukee Road in Southern Wisconsin, and will be better able to preserve the facilities for the continuance of such service, and

NOW THEREFORE, BE IT RESOLVED that the Jefferson County Economic Development Consortium (JCEDC) will pay up to \$14,000 toward membership dues of the Wisconsin River Rail Transit Commission and urges the County Administrator and County Finance Committee to include sufficient funding in the 2014 county budget for the balance of the membership dues of the Wisconsin River Rail Transit Commission.

BE IT FURTHER RESOLVED that the JCEDC Secretary is directed to forward copies of this resolution to the County Administrator and to the Chair of the County Finance Committee.

Adopted by the Jefferson County Economic Development Consortium Board of Directors this 14th day of August 2013.

s/John David
John David
Chairperson

Attest:

s/Dennis Heling
Dennis Heling Director

Fiscal Note: Membership dues for the Wisconsin River Rail Transit Commission are currently \$28,000 per year.

**NOTICE OF PUBLIC HEARING
JEFFERSON COUNTY PLANNING AND ZONING COMMITTEE**

Steve Nass, Chair; Greg David, Vice-Chair; Don Reese, Secretary; Amy Rinard; George Jaeckel

SUBJECT: Map Amendments to the Jefferson County Zoning Ordinance and Requests for Conditional Use Permits

DATE: September 19, 2013

TIME: 7:00 p.m.

PLACE: Room 205, Jefferson County Courthouse, 320 S. Main St., Jefferson, WI

1. **Call to Order**
2. **Roll Call**
3. **Certification of Compliance with Open Meetings Law Requirements**
4. **Review of Agenda**
5. **Explanation of Process by Committee Chair**
6. **Public Hearing**

NOTICE IS HEREBY GIVEN that the Jefferson County Planning and Zoning Committee will conduct a public hearing at 7 p.m. on Thursday, September 19, 2013, in Room 205 of the Jefferson County Courthouse, Jefferson, Wisconsin. A hearing will be given to anyone interested in the proposals. **PETITIONERS, OR THEIR REPRESENTATIVES, SHALL BE PRESENT.** Matters to be heard are petitions to amend the zoning ordinance of Jefferson County and applications for conditional use permits. A map of the properties affected may be obtained from the Zoning Department. Individual files are available for viewing between the hours of 8 a.m. and 4:30 p.m., Monday through Friday, excepting holidays. If you have questions regarding these matters, please contact Zoning at 920-674-7131.

**FROM EXCLUSIVE AGRICULTURAL A-1 TO A-3, AGRICULTURAL/RURAL
RESIDENTIAL**

R3661A-13 – Brian Statz: Create a 1.7-acre vacant lot and a 5-acre lot around the home at **N7119 Hillside Drive** in the Town of Concord, part of PIN 006-0716-0523-000 (48.54 Acres).

**FROM A-3, AGRICULTURAL/RURAL RESIDENTIAL TO A-2,
AGRICULTURAL AND RURAL BUSINESS**

R3666A-13 & CU1743-13 – Jake Brock/Becker Trust Property: Rezone Parcel 016-0614-3543-002 (1.476 Acre) with conditional use to allow construction contractor businesses at **N2603 Kutz Road** in the Town of Koshkonong.

CONDITIONAL USE PERMIT APPLICATIONS

CU1750-13 – Carl P. Jr. & Shawna Dehner: Conditional use to allow a 2,048 square foot structure up to 18' 6" high in a residential R-2 zone at **N1522 Poeppel Road**, Town of Koshkonong on PIN 016-0514-1624-025 (0.665 Acre).

CU1751-13 – Douglas & Christine Falkner: Conditional use to allow farm-type animals in a Residential R-2 zone at **W2245 River Road**, Town of Ixonia, on PIN 012-0816-1912-002 (4.73 Acres).

CU1752-13 – Douglas & Christine Falkner: Conditional use to allow an extensive on-site storage structure of 1,296 square feet at **W2245 River Road**. The site is in the Town of Ixonia, on PIN 012-0816-1912-002 (4.73 Acres).

7. Adjourn

Individuals requiring special accommodations for attendance at the meeting should contact the County Administrator at 920-674-7101 24 hours prior to the meeting so that appropriate arrangements can be made.

A recording of the meeting will be available from the Zoning Department upon request.

RESOLUTION NO. 2013-____

Highway Facility – Choice of Construction Material

WHEREAS, Jefferson County has analyzed what material to use for construction of the Highway Facility both in the upfront cost of construction and the lifecycle cost of the facility, and

WHEREAS, the design process is at a critical point requiring direction to facilitate the economical design of the facility,

NOW, THEREFORE, BE IT RESOLVED that the Highway Facility shall be constructed of: (Pre-Cast Concrete) (Pre-engineered Steel) (A combination of pre-cast concrete & pre-engineered steel) * _____.

*Choice of material to fill in the blank to be made by person offering the resolution. This resolution may be repeated until one choice receives a majority vote.

AYES _____

NOES _____

ABSTAIN _____

ABSENT _____

Pre-Engineered Metal Costs

- Initial \$15/SF decrease in costs, totaling \$1,500,000
- Add-backs decrease savings:
 - 8' concrete knee wall around perimeter = \$188,000
 - Metal building footprint is larger by 10,000 SF at \$75/SF = \$750,000
 - Addition of interior metal liner panel = \$48,000
 - Upgrade to higher performing metal coatings = \$21,000
 - Additional heights with gable slope to clear bridge crane and truck bed extensions, resulting in greater area of building enclosure surface = \$32,0000
 - Upgrade in coating protecting steel columns from corrosion = \$12,000.
 - Total add backs costs = \$1,051,000
 - Net savings = \$449,000

Metal Building Alternative

Pre-Engineered Performance Issues

- Less efficient in layout, building becomes "T" shaped and cannot stack "boxes" next to each other.
- Building mechanicals need to be located inside the building envelope rather than roof mounted. Causing higher ceilings and more heating and ventilation area.
- Parking Garage will be less efficient due to rigid frame columns obstructions. Stalls have to "dodge" the column base.
- Repair Garage will be less efficient due to separate crane structure and required clearances.
- Building plan becomes more stretched out and staff are further apart lessening operational efficiency
- Panels can become dented and owners usually don't replace panels for 30 years cycles.
- Panels become covered in soot and significantly cut light efficiency.
- Harder to access HVAC units hung up in high ceilings

Metal Building Alternative



BARRIENTOS
design & consulting

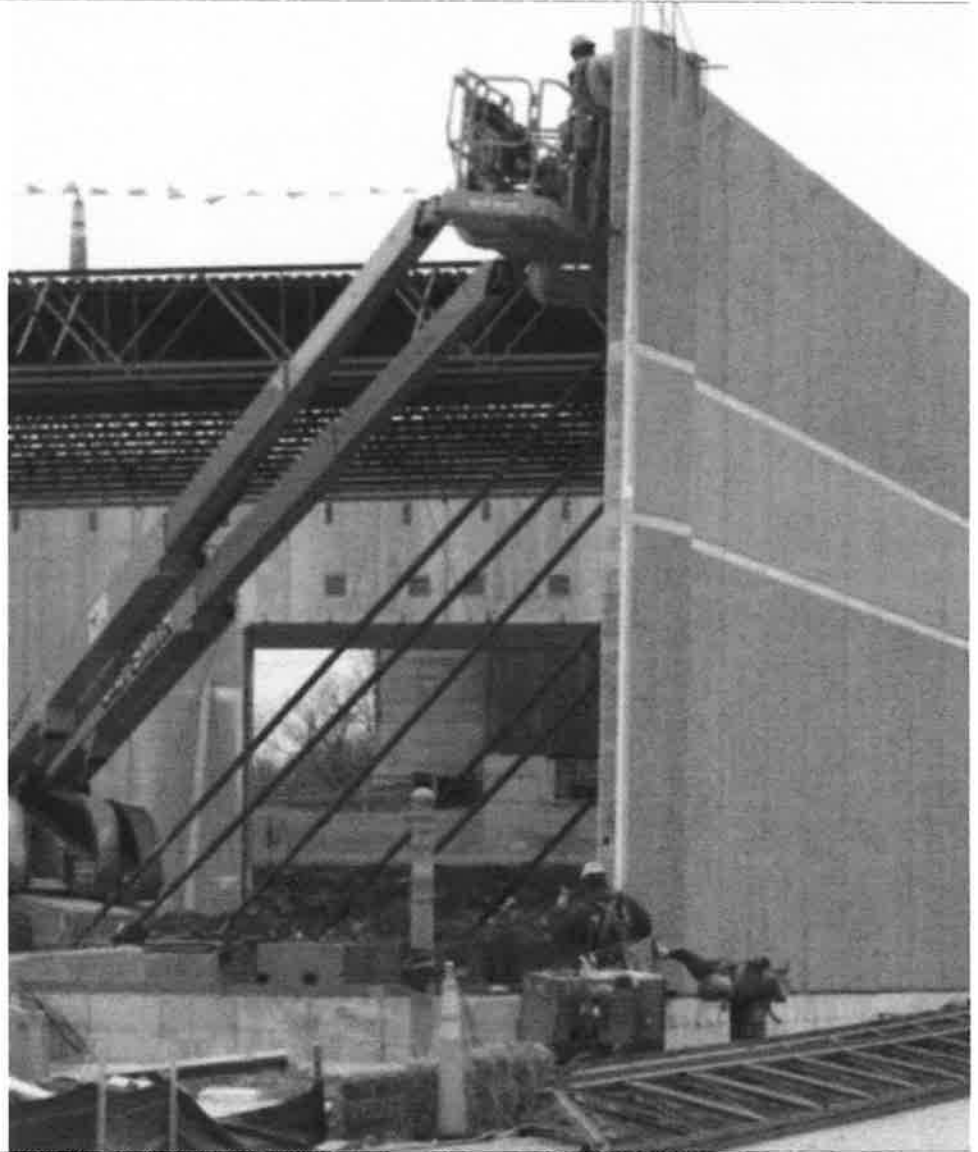
JEFFERSON COUNTY HIGHWAY SHOP COUNTY BOARD PRESENTATION



1. Shorter Life-Span.
2. Acoustics are more difficult to control.
3. Large columns at perimeter.
4. Requires a concrete knee wall.
5. Finishes and insulation degrade faster in corrosive environments.
6. Poor vapor retarder and batt insulation may support mold growth.
7. Column pads are exposed and can corrode.
8. Lower insulation values and thermal bridging.
9. Sloped roof structure is more difficult to put roof top equipment on.
10. Difficult roof drainage conditions against other building elements.
11. Dissimilar materials – Leakage.
12. Much less durable to impact.
13. Redundant structure.

Pre-Engineered Building - CONS

1. Maintenance free for most of the serviceable life of the building.
2. Highly durable interior and exterior for impact and corrosion.
3. Rigid insulation is "sandwiched" and will not degrade or grow mold.
4. Roof insulation is typically higher quality with no thermal bridging.
5. Low-slope roof allows for roof-top equipment.
6. Walls are structural – No redundant structure where dissimilar building methods meet.
7. Precast serves as a fire wall where occupancy separations are required.
8. No diagonal bracing required for the structure.
9. Factory controlled fabrication.
10. Lower life-cycle costs.
11. Strapping services to wall.
12. Better acoustics.



Precast Concrete Construction - PROS

Precast resistance to Corrosion

- Salt comes off the trucks as they are melted. Drivers often spray down the trucks in their parking stalls spreading salt up 8' up.
- The radiant heat loops with the melting create a humid environment.
- Salt corrosion damage mainly seen at the base of the buildings.
- Precast panels are very resistant to humidity and salt corrosion.
- Precast building has steel joists up from 20' to 32' in height.
- Steel joists will be painted and are in area of ventilation fans and thus more air movement and less humidity.

Metal Building Alternative

Combining Metal and Precast Construction

- Will create a line of dissimilar materials which have different thermal expansion rates. Metal expands rapidly with heat and causes leaks.
- Metal buildings are not as stiff to wind forces and will move more than precast, creating slippage building the buildings.
- Different contractors and tradesmen will erect each building area. Where the two meet is a trade gap but roofing and flashing membranes must bridge this gap.
- Our experience at Door County Highway Shop has shown this gap is where leakage occurs.

Life Cycle Replacements of Metal vs. Precast

- Metal building at 30 years:
 - Metal wall panels, significant replacement of panels and painting
 - Metal roof panels, some replacement and painting
 - Building insulation, replace batt insulation
 - Metal girts and wind braces, some replacement
 - Repair and replacement costs at 30 years = \$2,200,000
- Precast building at 30 years:
 - Wall panels, painting
 - Membrane roof, replacement
 - Repair and replacement cost at 30 years = \$790,000

Difference in 30 years cycle costs = \$1,410,000, savings of using Precast

Professional Recommendation

As the County's professional consultant, Barrientos Design recommends a precast concrete building enclosure because:

1. Precast Concrete has a significantly longer expected life-span – especially when used in corrosive environments.
2. Precast Concrete has a much more durable and energy efficient building enclosure – with higher insulating values.
3. Precast Concrete is the industry standard for highway maintenance shops and is more appropriate for the use.

RESOLUTION NO. 2013-____

Highway Department building size

WHEREAS, the County continues to review operations of the Highway Department as part of the new facility, and

WHEREAS, there is an on-going review of which equipment/trucks will be placed in heated versus cold storage and which vehicles will be designated for satellite facilities,

NOW, THEREFORE, BE IT RESOLVED that the heated garage of the main facility shall not exceed * _____ sq. feet designed to house * _____ pieces of equipment.

*Blanks to be filled by person offering resolution. This may be repeated until a majority vote approves a final resolution.

AYES _____

NOES _____

ABSTAIN _____

ABSENT _____

RESOLUTION NO. 2013-____

Highway Facility – Automated Vehicle Wash Alternative Bid

WHEREAS, Jefferson County has consistently looked at utilization of technology and equipment to improve the efficient use of manpower, and

WHEREAS, the act of washing vehicles manually takes approximately 30-45 minutes versus 5-7 minutes with an automated wash, and

WHEREAS, Jefferson County fleet costs will be reduced by the availability of an automated vehicle wash.

NOW, THEREFORE, BE IT RESOLVED that consideration of an automated vehicle wash be considered in the construction of the new Highway Facility and shall be an Alternative Bid Package for consideration by the Board at time of opening of construction bids.

AYES _____

NOES _____

ABSTAIN _____

ABSENT _____



Automated Truck Wash

Automated Truck Wash

- Automated Truck Washing systems can be design to serve many functions. The systems can automatically adjust to the type of vehicle.
- Can be used for large trucks AND other smaller County vehicles and passenger cars.



Automated Truck Wash Costs

- Freshwater System include nozzle arches, tire guides, holding tanks, pumps, valves, control system, and all other necessary equipment.
- Total Cost for Equipment \$158,000.

RESOLUTION NO. 2013-____

Highway Facility – Geothermal/Environmental Options

WHEREAS, Jefferson County has taken proactive steps to develop a Green program to improve energy costs and to be stewards of the community, and

WHEREAS, Jefferson County has invested in green systems and building practices on a yearly basis where there is a return on investment (ROI).

NOW, THEREFORE, BE IT RESOLVED that the Highway Facility will look to utilize Green Building Practices where practicable, specifically where there is sufficient ROI.

BE IT FURTHER RESOLVED that utilization of geothermal in the office sections of the facility be included as part of the design process and shall be an Alternative Bid Package for consideration by the Board at time of opening of construction bids.

AYES _____

NOES _____

ABSTAIN _____

ABSENT _____

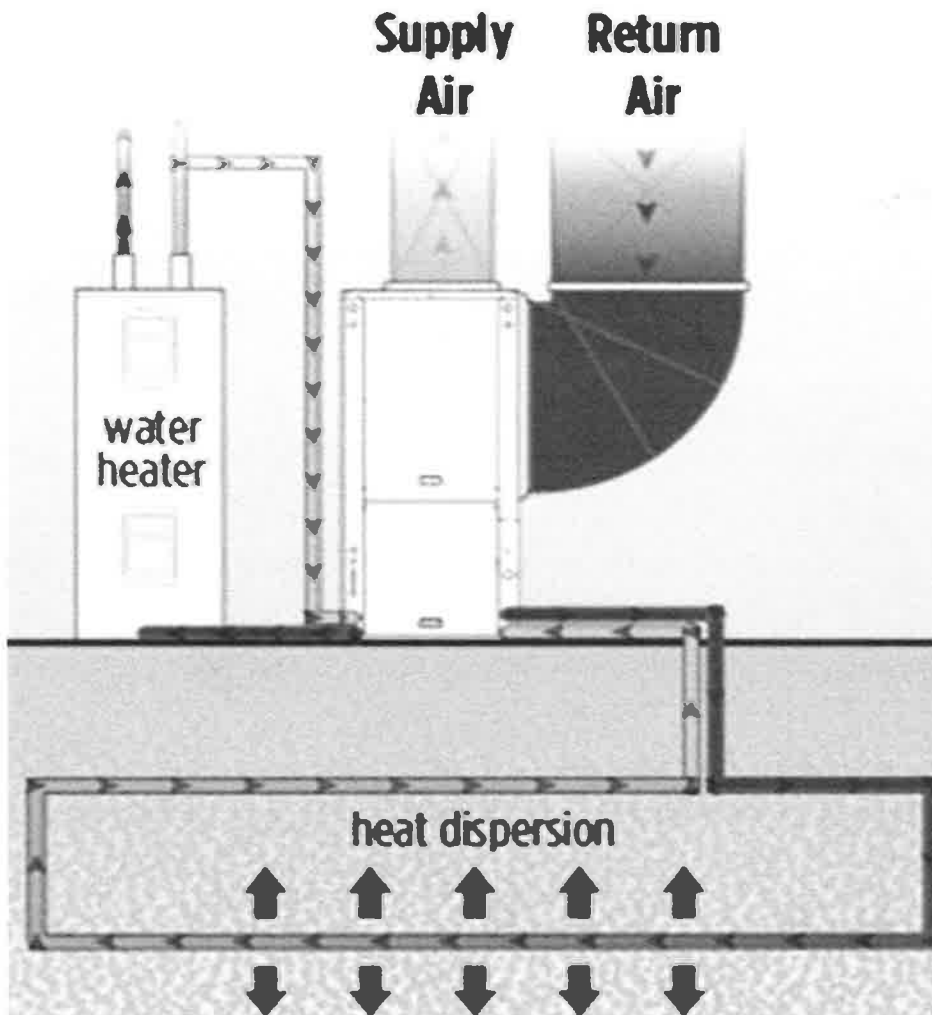
Baseline Sustainability (included in the design)

1. Proper solar orientation and shading techniques.
2. Ample natural lighting (clerestory windows & light pipes).
3. Energy-Efficient building envelope.
4. Durable, long-lasting building materials.
5. Regionally-produced building materials and labor.
6. "Smart" MEP systems and controls.
7. Air-to-air heat exchangers.
8. Design using the LEED-Silver Checklist.
Sustainable Site, Water Efficiency, Energy and Atmosphere,
Materials and Resources, Indoor Environment Quality.

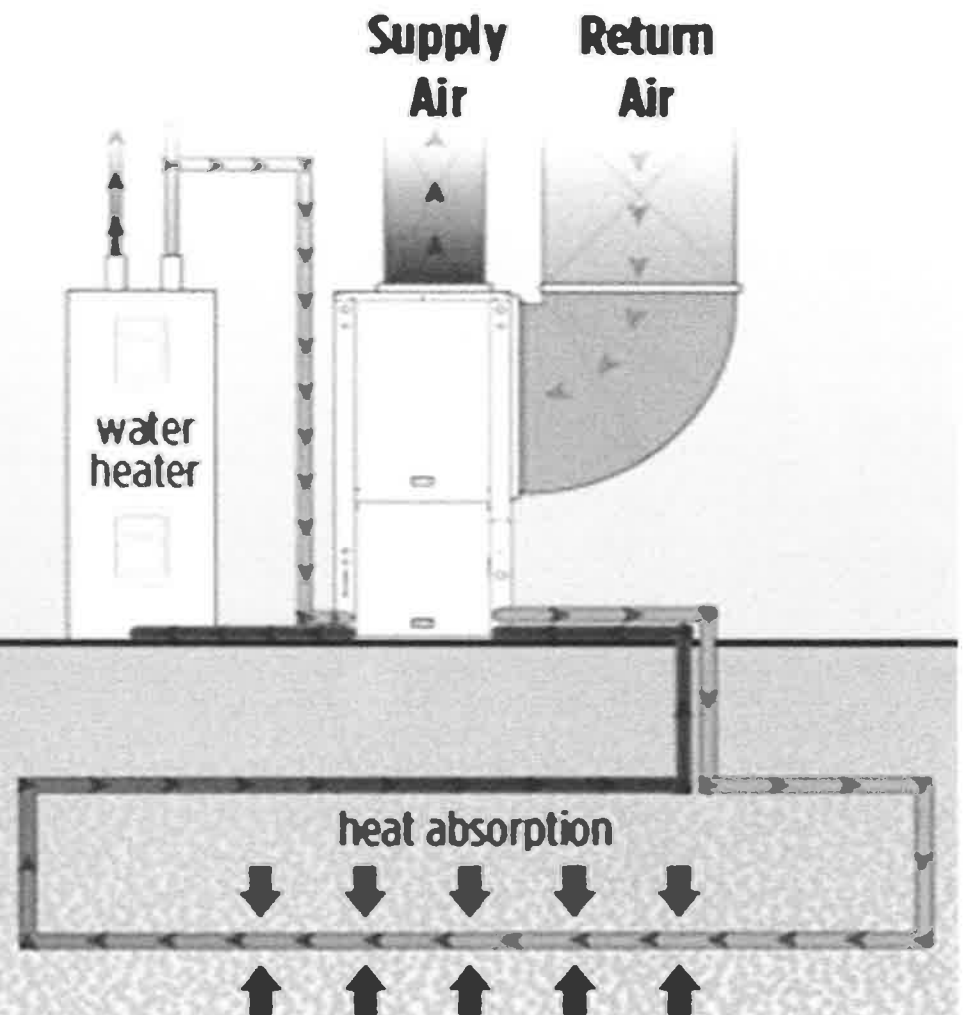
Additional Sustainability Options (not included in the current budget)

1. Geothermal heating and cooling for portions of the building.
 - *See following slide for cost analysis.*
2. Solar Passive & Daylighting.
 - *Depends on the amount of area to be served.*

Cooling Mode



Heating Mode



Geothermal Heating and Cooling

Geothermal Heating and Cooling

1. Ground-Source Heat Pumps and Wells to heat and cool liquid.
2. System must be in "balance" – heat extraction during the winter months and "recharged" with heat dispersion during the summer months.
3. Only feasible for areas that are heated and cooled.
4. Cost adds an addition \$22 per square foot.

Office and administration areas 5,331 sf	\$ 118,000
Entire heated and cooled area 22,897sf	\$ 503,734
5. Payback interval - 15-20 years (small office applications).
6. Equipment lifespan (heat pump) - 20-25 years.

**REPORT
TO THE HONORABLE MEMBERS OF THE JEFFERSON COUNTY
BOARD OF SUPERVISORS**

The Jefferson County Planning and Zoning Committee, having considered petitions to amend the zoning ordinance of Jefferson County, filed for public hearing held on August 15, 2013, as required by law pursuant to Wisconsin Statutes, notice thereof having been given, and being duly advised of the wishes of the town boards and persons in the areas affected, hereby makes the following recommendations:

APPROVAL OF PETITIONS R3664A-13 and R3665A-13

DATED THIS TWENTY-SIXTH DAY OF AUGUST 2013

Donald Reese, Secretary

THE PRIOR MONTH'S AMENDMENTS R3646A-13, R3658A-13, R3659A-13, R3660A-13 R3662A-13 AND R3663A-13 ARE EFFECTIVE UPON PASSAGE BY COUNTY BOARD, SUBJECT TO WIS. STATS. 59.69(5).

ORDINANCE NO. 2013-_____**Amend Zoning Ordinance**

WHEREAS, the Jefferson County Board of Supervisors has heretofore been petitioned to amend the Jefferson County Zoning Ordinance, and

WHEREAS, Petitions R3664A-13 and R3665A-13 were referred to the Jefferson County Planning and Zoning Committee for public hearing on August 15, 2013, and

WHEREAS, the proposed amendments have been given due consideration by the Board of Supervisors in open session,

NOW, THEREFORE, BE IT ORDAINED that the Jefferson County Board of Supervisors does amend the zoning ordinance of Jefferson County (and official zoning maps) as follows:

FROM AGRICULTURAL A-1 TO A-3, AGRICULTURAL/RURAL RESIDENTIAL

Rezone to create a 6-acre building site from part of PIN 006-0716-1914-000 (93.4 acres), on **Hillside Drive** in the Town of Concord. This utilizes the last available A-3 zone for the property; therefore rezoning is conditioned upon recording of an affidavit acknowledging that fact. It is further conditioned upon road access approval from the Town of Concord, upon receipt by Zoning of a soil test showing sites for installation of both initial and replacement private sewage systems, and upon approval and recording of a final certified survey map for the property. Access for the lot shall be on the 66-foot wide access strip. Rezoning shall be null and void and of no effect one year from the date of County Board approval unless all applicable conditions have been completed by that date. (R3664A-13 – Donald & Bonnie Lott)

Rezone approximately 0.5 acre of PIN 022-0613-3621-000 (30.001 acres) to add it to an adjoining A-3 zoned lot at **W7531 CTH C** in the Town of Oakland. This is a lot line adjustment consisting of existing lot area. Rezoning is conditioned upon receipt and recording of either a final certified survey map for the enlarged lot or deed transfer document for the 0.5 acre. Rezoning shall be null and void and of no effect one year from the date of County Board approval unless all applicable conditions have been completed by that date. (R3665A-13 – Robert Ross)

AYES _____
 NOES _____
 ABSTAIN _____
 ABSENT _____

Requested by
 Planning and Zoning Committee

09-10-13

Deb Magritz: 09-04-13

RESOLUTION NO. 2013-_____

Support prioritizing road maintenance

WHEREAS, resolutions and correspondence from other counties have indicated their support for use of state transportation funds exclusively for transportation projects, and

WHEREAS, referenda in various counties have supported a constitutional amendment to that effect, and

WHEREAS, transportation funding is allocated between new construction and maintenance including state support for county and local government road maintenance, and

WHEREAS, the Administration & Rules Committee, after review of Wisconsin County Association resolutions and correspondence from other counties, recommends limiting use of transportation funds for transportation projects, and further recommends prioritizing expenditures supporting county and local government road maintenance before allocating funds to significant new highway construction,

NOW, THEREFORE, BE IT RESOLVED that the Jefferson County Board supports use of transportation dollars exclusively for transportation projects and further requests the State to prioritize its expenditures to fully support county and local road maintenance before approving any new expensive construction projects.

BE IT FURTHER RESOLVED that the County Clerk shall forward a copy of this resolution to Governor Walker, Wisconsin Counties Association and Jefferson County's state legislators.

Fiscal Note: No immediate fiscal impact.

AYES _____

NOES _____

ABSTAIN _____

ABSENT _____

Requested by
Administration & Rules Committee

09-10-13

Phil Ristow: 09-05-13

Jefferson County Election Equipment Purchase

- ❖ Retirement: Jefferson County purchased 34 OPTECH IIIPE for the total cost of \$196,295 in 1996. 1990 technology outdated with 20 year lifetime. These are provided to 25 of our municipalities holding 42 elections. The Optechs have been under maintenance and have had very few problems.
- ❖ Outdated: WindowsXP software required for programming software will not be supported after April 2014
- ❖ Reliability: No replacement parts available for the OPTECH and very expensive to replace. Not sure if replacement parts will be certified by state.
- ❖ Unique: Wisconsin is one of the few states still using the OPTECH and therefore less software (programming) support available.

DS200 advantages:

- ❖ Voter Friendly: Voters benefit from instant, on-line alerts regarding questionable ballots
- ❖ Compatibility: with Automark (ADA machines).
- ❖ Multiple Wisconsin counties with same system: LaCrosse County purchase in 9/2013; Brown County, Rock County, Dane County,
- ❖ Cost Savings: Will not need \$45 infrared ink cartridges for Automarks, saving \$90/polling place/election or \$2700/election
- ❖ Programmer Friendly: software enhancements to make work flow smoother

Fiscal Impact:

The 2009 appropriation \$211,225 for purchase of 35 new ballot machines has been carried forward and is available for the purchase.

2013 estimated cost is \$249,200 for 38 new ballots machines. \$37,375 has been provisionally transferred from contingency fund. Cost increases due to 3 additional voting machines, additional jump drives, and 4 year old quote.

2014 maintenance is included under the hardware warranty, saving \$4,275.

August 8, 2013 Finance Committee Funding

August 13, 2013 Government Accountability Board (GAB) Modem Approval

September 10, 2013 County Board Approval

RESOLUTION NO. 2013-_____

Authorization for replacement of county-wide voting equipment

WHEREAS, the current ballot counting equipment used by all municipalities in Jefferson County was purchased in 1996, and has performed well, but is now at the point it must be replaced because replacement parts are no longer available and programming software support will be discontinued after April 2014, and

WHEREAS, the County's program of supplying uniform election equipment to all Jefferson County municipalities has achieved cost savings and helps insure the integrity of the election process, and

WHEREAS, the Finance Committee recommends continuing the county policy of supplying uniform equipment to all municipalities and recommends doing so through Election Systems & Software (ES&S) as the vendor for all election equipment and ballots for all municipalities in the County, and replacing the optical-scan ballot-counting equipment with the DS200 voting system available from ES&S, and

WHEREAS, the DS200 is certified by the Election Assistance Commission (EAC), the Government Accountability Board (GAB), is compatible with the Automark systems being retained for use by disabled voters, is more voter friendly and provides instant online alerts regarding questionable ballots, and

WHEREAS, election equipment agreements have been sent to all municipal clerks which provide the terms upon which the County supplies the equipment and the municipalities maintain it,

NOW, THEREFORE, BE IT RESOLVED that the Jefferson County Board does hereby authorize the County Clerk to contract for 38 DS200 voting systems, associated equipment, shipping, training and related services from Election Systems & Software in the total amount of \$249,200.00.

Fiscal Note: The 2009 appropriation of \$211,225 for purchase of 35 new ballot machines has been carried forward waiting for state certification of new election equipment. Now, 38 new ballot machines are required. The Finance Committee has transferred \$37,975 from the contingency account to the County Clerk's budget pending final approval of this resolution. The difference in cost from 2009 to 2013 is primarily due to the need for three additional machines. One other voting system is available at a comparable price, but that voting system does not have the software advantages of the DS200. A 2014 maintenance contract will not be required as the hardware is under warranty, generating a savings of \$4,275.

AYES _____
NOES _____
ABSTAIN _____
ABSENT _____

Requested by
Finance Committee

09-10-13

ORDINANCE NO. 2013-____

Amend Personnel Ordinance to clarify the implementation of the consultant's reclassification recommendations

THE COUNTY BOARD OF SUPERVISORS OF JEFFERSON COUNTY DOES HEREBY ORDAIN AS FOLLOWS:

SECTION 1. HR0210(B) AMENDMENT AND MAINTENANCE OF THE CLASSIFICATION PLAN of the Personnel Ordinance is amended as follows:

HR0210 AMENDMENT AND MAINTENANCE OF THE CLASSIFICATION PLAN.

- B. The Human Resources Committee, upon written request of the County Administrator, upon written request of any employee, or upon its own initiative, may initiate an inquiry into the classification of any position. Written requests for changes in the classification plan shall be submitted to the Human Resources Department by April 1 of each year, with the exception of requests initiated by the County Administrator, which may be reviewed at any time. The County may ~~shall~~ use a consultant to consider such proposed changes and shall review the classification plan. The consultant's recommendations shall be implemented unless it can be demonstrated that the consultant acted without any factual basis when considering the requests, or unless the Board takes action to uniformly delay or deny all recommendations based on budgetary or other constraints. ~~and present any Recommended changes shall be presented to the Human Resources Committee and then .These recommendations will be presented to the Board of Supervisors with the proposed County budget for the succeeding year. Reclassifications, grade reassignments or job title changes shall be effective January 1 of the succeeding year, unless otherwise recommended and approved by the Board of Supervisors. Employees requesting reclassification shall be informed of the consultant's recommendation and Human Resources Committee action by the Human Resources Department. [am. 07/08/08, ord. 2008-14]~~

SECTION 2. This ordinance shall be effective after passage and publication as provided by law.

AYES _____

NOES _____

ABSTAIN _____

ABSENT _____

Requested by
Human Resources Committee

09-10-13

Terri Palm-Kostroski: 07-23-13; 08-19-13

RESOLUTION NO. 2013-_____

Authorize recreational trail grant application and acceptance

WHEREAS, the Parks Committee has expended significant time and effort towards establishing a multi-use trail from Waterloo to Watertown and multi-use trail from Watertown to Oconomowoc, which trails would use existing roadways and space on utility corridors, and

WHEREAS, the anticipated cost of such projects from the west county line to the east county line is approximately \$15M given the amount of paving required and the number of bridges, and

WHEREAS, the Parks Committee recommends seeking grant funds from the Department of Natural Resources thru the Recreational Trail Program and the Stewardship Program, and from the Department of Transportation thru the Transportation Alternatives Program to fund the entire project, construction of which would not begin before 2015 at the earliest, and

WHEREAS, the Parks Committee recommends completion of these multi-purpose trails as part of the County's Bikeway/Pedestrianway Plan, the Jefferson County Comprehensive Plan and the Glacial Heritage Area Plan and economic development in the form of enhanced tourism facilities, and

WHEREAS, the grant applications need to be accompanied by a resolution supporting the project,

NOW, THEREFORE, BE IT RESOLVED that the Parks Department is authorized to apply for grants from the Wisconsin DNR and DOT programs for funding these multi-use recreational trails from Waterloo to Oconomowoc, and if grants are awarded in sufficient amounts to pay the entire cost of such construction, the County Administrator is authorized to accept said grants, sign the grant contracts, and perform all other duties necessary to comply with and fulfill the grant provisions.

Fiscal Note: The various grant programs should fund the cost of construction. Thereafter, Jefferson County would be responsible for maintenance which is estimated at \$600 - \$900 per mile per year over the approximately 26 miles of trail that would be added. The County will continue to promote Adopt-A-Trail relationships to lessen the cost of upkeep.

AYES _____
NOES _____
ABSTAIN _____
ABSENT _____

Requested by
Parks Committee

09-10-13

Phil Ristow: 09-05-13; Joe Nehmer: 09-05-13

RESOLUTION NO. 2013-_____**Authorize purchase of approximately 17.5 acres of Crawfish River frontage**

WHEREAS, as part of the Highway 26 Jefferson bypass project, the Department of Transportation has a 17.5 acre parcel of surplus land immediately south of Highway 18 and adjacent to the west bank of the Crawfish River, and

WHEREAS, the Department of Transportation has offered said land to Jefferson County for \$56,000, and

WHEREAS, the Parks Committee has previously been advised of the interest of many local civic groups in seeing said land preserved for public access from the bike trail and the Crawfish River and their willingness to fund acquisition and be responsible for maintenance, and

WHEREAS, the Parks Committee recommends purchasing the land if such funds can be raised by its non-governmental partners,

NOW, THEREFORE, BE IT RESOLVED that the County Administrator is authorized to execute such documents as may be necessary to complete this transaction subject to the requirement that the funds be donated prior to January 1, 2014, and the County be provided access from the south side of Highway 18 into the property for maintenance purposes which access would be gated to prevent use by non-governmental motor vehicles.

Fiscal Note: No levy funds would be used for the purchase. Future maintenance costs would be very limited, if any.

AYES _____

NOES _____

ABSTAIN _____

ABSENT _____

Requested by
Parks Committee

09-10-13

Phil Ristow: 09-05-13; Joe Nehmer: 09-05-13